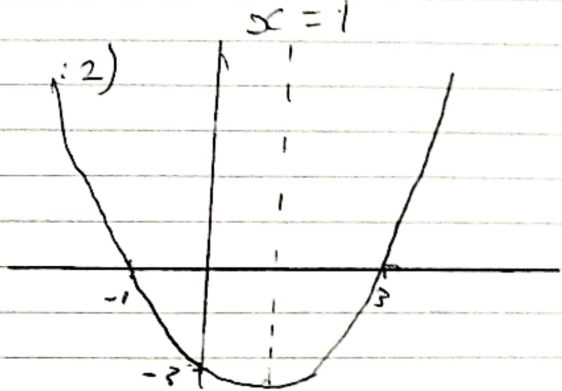
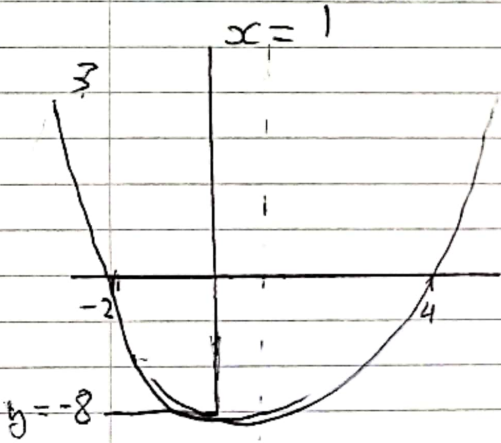


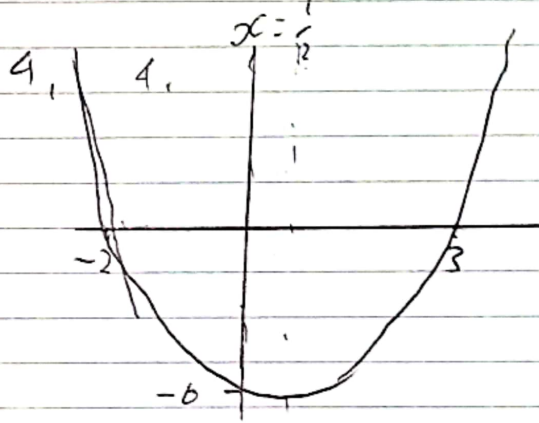
Roots are 1 and 5
 Sum = 6
 So this fits both a and g.
 Symmetry $x=3$



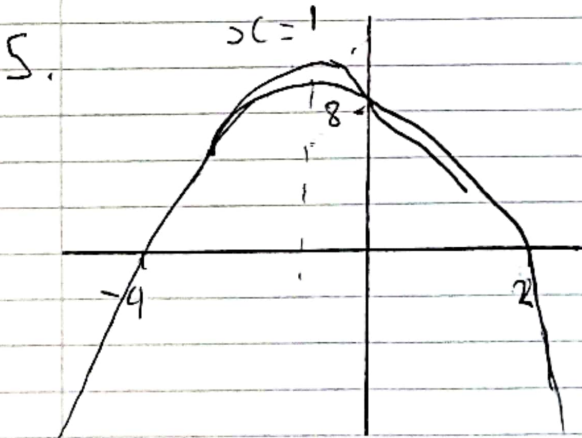
Roots are -1 and 3
 Sum = 2
 This fits e.
 Symmetry $x=1$



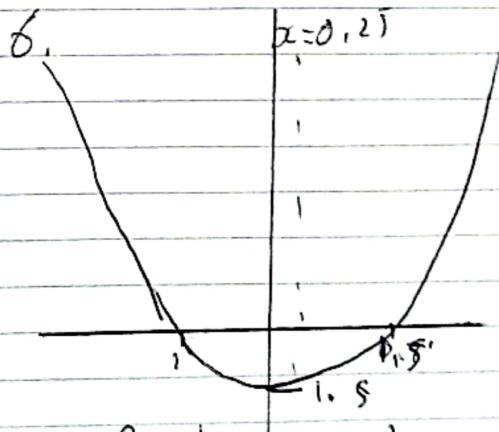
Roots are 4 and -2
 Sum = 2
 This fits e and f.
 Symmetry $x=1$



Roots are 3 and -2
 Sum = 1
 This fits i.
 Symmetry $x=1/2$

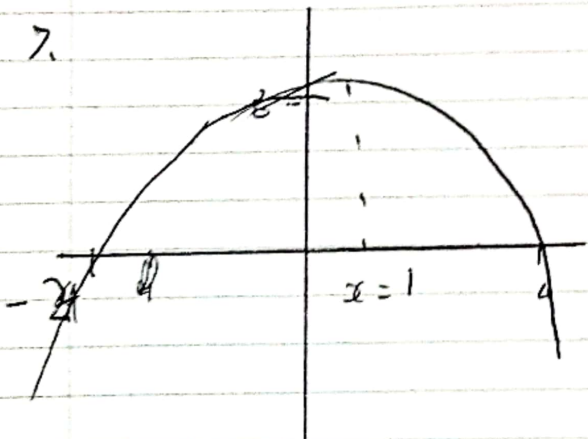


Roots are -4 and 2
 Sum = 2
 This fits c and h

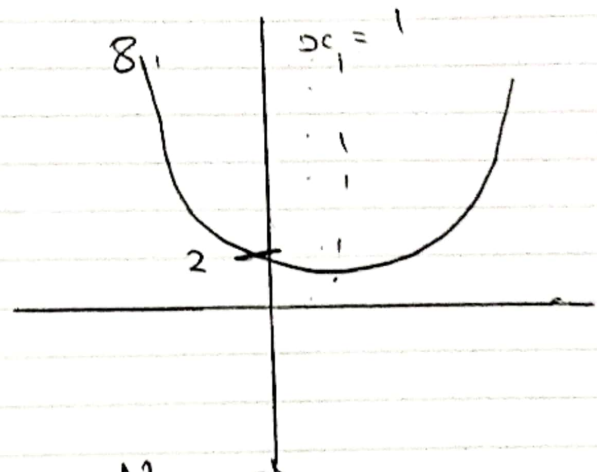


Roots are -1 and 1.5
 Sum = 0.5
 This fits b

7.

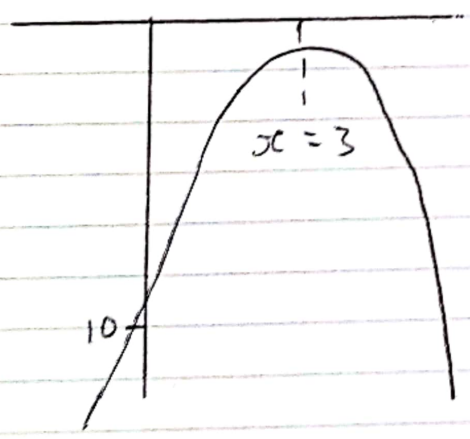


Roots are -2 and 4
 Sum = 2
 Symmetry $x = 1$
 has $(0, 8)$ and $(2, 8)$ on line
 Fits h



No roots
 Symmetry $x = 1$
 Fits d and e

9.



No roots
 Symmetry $x = 3$
 Fits g.

1. g
2. e
3. f
4. i
5. c
6. b
7. h
8. d
9. a