

Cubies

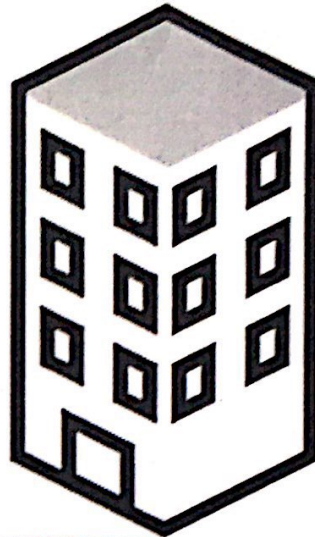
Age 7 to 11 ★★

This problem has been designed to work on in a group of about four. For more details about how you might go about doing this, please read the Teachers' Resources.

Cubies are a race of tiny people who live on an island in the middle of the Indian Ocean. The island they live on is very small but their population is quite large. They live in a tall building so they all have enough space to live on the island.

Scientists have been measuring the Cubies' population over the years but Cubies are very shy. When humans approach them they hide in their homes.

Over the years the scientists have recorded snippets of information in this table. This information will help you investigate the structure of the building and answer the following questions to help the scientists:



- How many flats are there on each floor of the building?

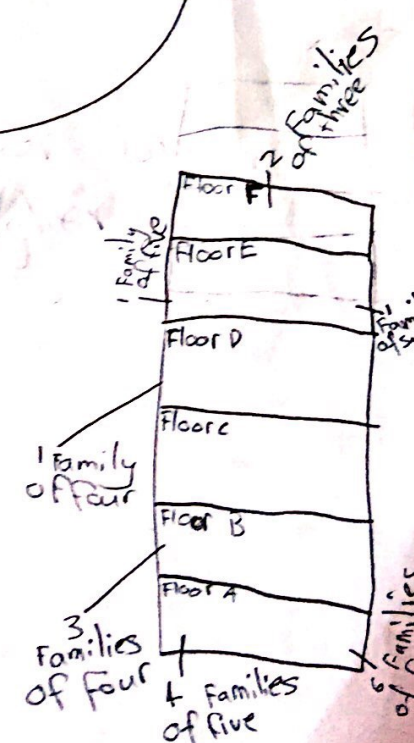
- How many Cubies are there in each family? For example, how many families are there with two Cubies in, perhaps a parent and a child Cubie? (We call these 'families of two'.) How many families of three Cubies are there? Can you keep going until you know exactly how many families of each size there are?

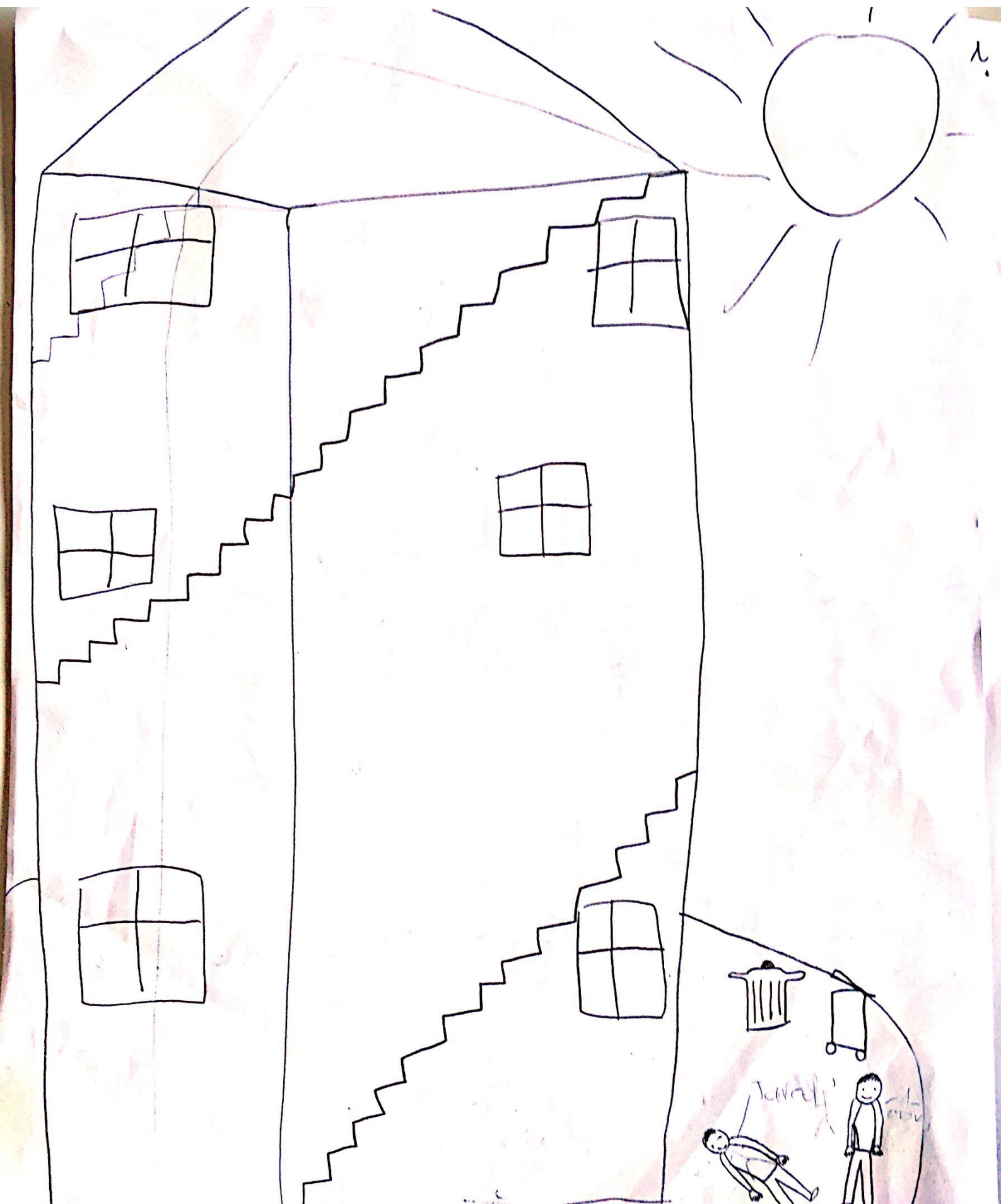
- Which families live on which floors? For example, how many families of two Cubies live on Floor A? What about Floor B? Can you keep going?

- What does the building itself look like? How are the flats arranged? Draw a diagram or make a model to show the scientists what you think!

4
7
2
1
0

Families of two cubies: 4
Families of three cubies: 9
Families of four cubies: 2
Families of five cubies: 6
Families of six cubies: 1



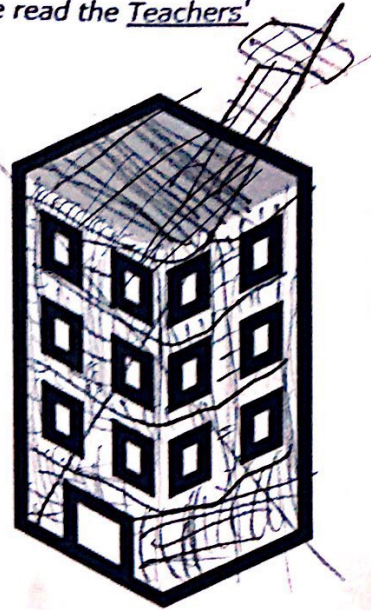


Cubies

Age 7 to 11 ★★

This problem has been designed to work on in a group of about four. For more details about how you might go about doing this, please read the Teachers' Resources.

Cubies are a race of tiny people who live on an island in the middle of the Indian Ocean. The island they live on is very small but their population is quite large. They live in a tall building so they all have enough space to live on the island.



Scientists have been measuring the Cubies' population over the years but Cubies are very shy. When humans approach them they hide in their homes.

Over the years the scientists have recorded snippets of information in this table. This information will help you investigate the structure of the building and answer the following questions to help the scientists:

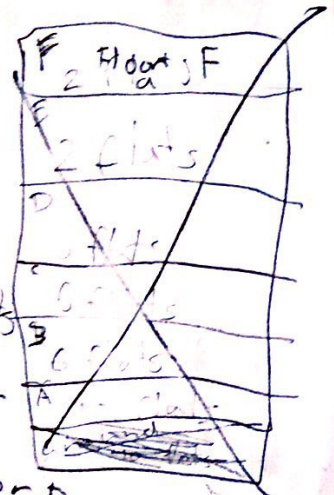
- How many flats are there on each floor of the building?
- How many Cubies are there in each family? For example, how many families are there with two Cubies in, perhaps a parent and a child Cubie? (We call these 'families of two'.) How many families of three Cubies are there? Can you keep going until you know exactly how many families of each size there are?
- Which families live on which floors? For example, how many families of two Cubies live on Floor A? What about Floor B? Can you keep going?
- What does the building itself look like? How are the flats arranged? Draw a diagram or make a model to show the scientists what you think!

F	2 flats
E	1 ^{size} 2 flats
D	6 flats
C	6 flats
B	6 flats
A	10 flats

Half as many families live

four families of two
~~one~~ families of five
 nine families of three
~~ten~~ 12 families of 2 adults
 and 2 children
~~12 families of four~~
 1 family of four on floor D

families of four live on the first four floors





Cubies

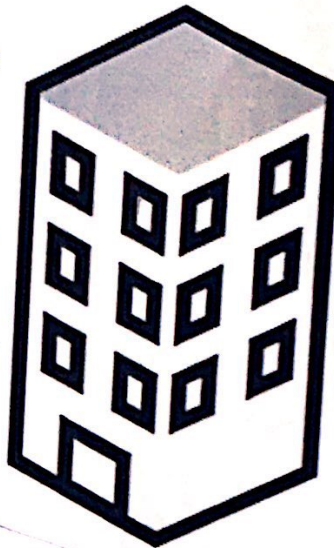
Age 7 to 11 ★★

This problem has been designed to work on in a group of about four. For more details about how you might go about doing this, please read the Teachers' Resources.

Cubies are a race of tiny people who live on an island in the middle of the Indian Ocean. The island they live on is very small but their population is quite large. They live in a tall building so they all have enough space to live on the island.

Scientists have been measuring the Cubies' population over the years but Cubies are very shy. When humans approach them they hide in their homes.

Over the years the scientists have recorded snippets of information in this table. This information will help you investigate the structure of the building and answer the following questions to help the scientists:



- How many flats are there on each floor of the building?

- How many Cubies are there in each family? For example, how many families are there with two Cubies in, perhaps a parent and a child Cubie? (We call these 'families of two'.) How many families of three Cubies are there? Can you keep going until you know exactly how many families of each size there are?

- Which families live on which floors? For example, how many families of two Cubies live on Floor A? What about Floor B? Can you keep going?

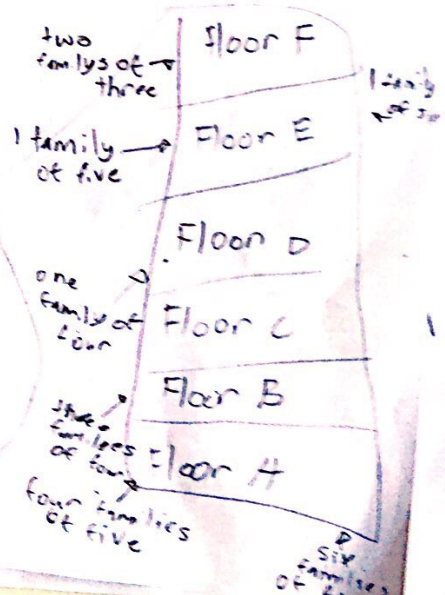
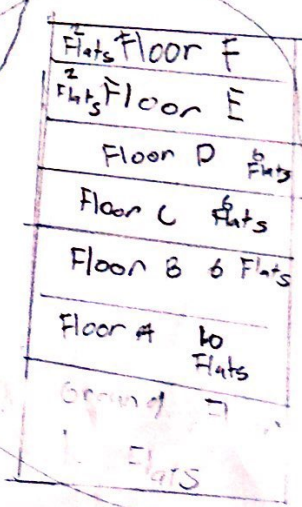
- What does the building itself look like? How are the flats arranged? Draw a diagram or make a model to show the scientists what you think!

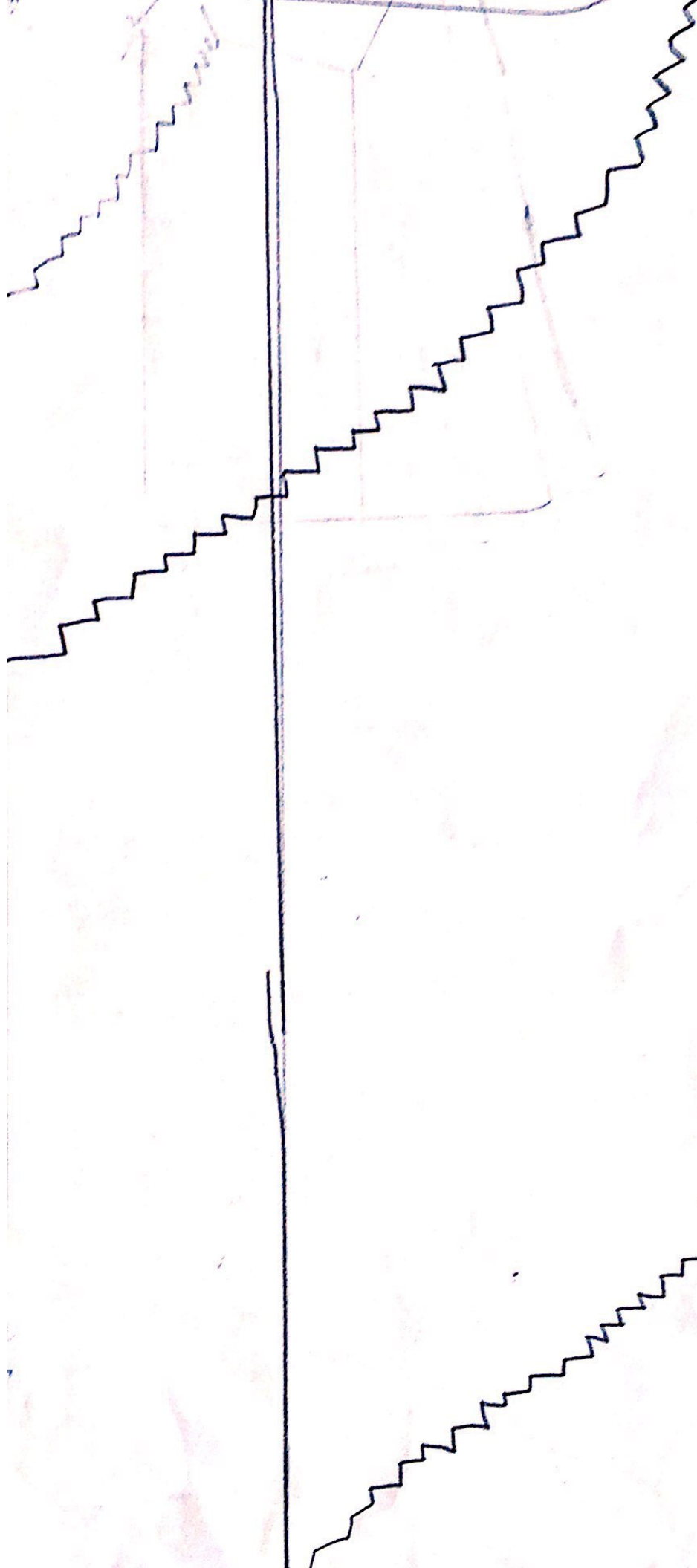
Floor E and F both same

Fewer flats on higher floors

4
7
2
1
0

- Families of two cubies : 4
- Families of 3 : 9
- Families of 4 : 12
- Families of 5 : 6
- Families of 6 : 1





Aaron Patel

Cubies

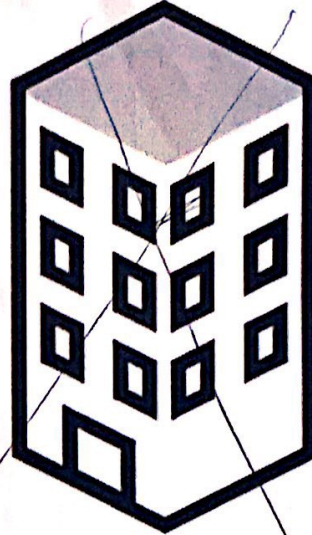
Age 7 to 11 ★★

This problem has been designed to work on in a group of about four. For more details about how you might go about doing this, please read the Teachers' Resources.

Cubies are a race of tiny people who live on an island in the middle of the Indian Ocean. The island they live on is very small but their population is quite large. They live in a tall building so they all have enough space to live on the island.

Scientists have been measuring the Cubies' population over the years but Cubies are very shy. When humans approach them they hide in their homes.

Over the years the scientists have recorded snippets of information in this table. This information will help you investigate the structure of the building and answer the following questions to help the scientists:



- How many flats are there on each floor of the building?

- How many Cubies are there in each family? For example, how many families are there with two Cubies in, perhaps a parent and a child Cubie? (We call these 'families of two'.) How many families of three Cubies are there? Can you keep going until you know exactly how many families of each size there are?

- Which families live on which floors? For example, how many families of two Cubies live on Floor A? What about Floor B? Can you keep going?

- What does the building itself look like? How are the flats arranged? Draw a diagram or make a model to show the scientists what you think!

